

# ANABEC ADVANCED CLEANING SOLUTION & ANASPHERE

Anasphere EPA REG. NO. 10324-131-72786

Waiting Rooms • Bathrooms • Pharmacies • Ambulances • Wheel Chairs • Emergency Rooms  
Operating Rooms • X-Ray Machines • Nurses Stations • Examination Rooms • Clinics



Anasphere will protect your facilities from viruses, bacteria, mold, mildew, fungi. The Advanced Cleaning Solution removes the organic debris leaving an extremely clean surface. Anasphere is a residual bacteriostat/sanitizer, effective against a broad spectrum of bacteria, is virucidal and inhibits the growth of mold and mildew and their odor under humid or wet contamination conditions. Surfaces protected with Anasphere are more easily and completely cleaned than untreated surfaces. Can be wiped, sprayed or fogged.

EFFECTIVE AGAINST MRSA, E. COLI, HERPES SIMPLEX TYPES 1 & 2 AND MANY OTHER HARMFUL VIRUSES, BACTERIA & MOLDS

## Advanced Cleaning Solution

Anabec's Patented Advanced Cleaning Solution removes organic debris with mechanical action for maximum material penetration leaving an extremely clean surface for porous and non porous building materials.

## Anasphere

Anasphere is designed to provide effective disinfection in areas where housekeeping is of prime importance in controlling the hazard of cross contamination on treated surfaces. This product meets AOCA use – dilution test standards for hospital disinfectants and food contact surfaces, approved for USDA inspected food processing facilities and is a sanitizer for exterior surfaces for siding, decks, patios, walkways and driveways.



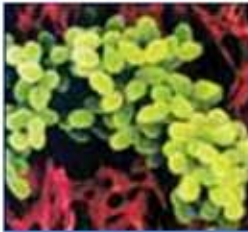
**386-672-6430**

[www.winwininspections.com](http://www.winwininspections.com)

392 S. Atlantic Ave. Ormond Beach, FL 32176

# ANASPHERE

**Disinfectant | Sanitizer | Deodorizer | Mildewstat | Virucide**



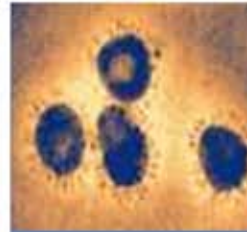
**MRSA**



**Aspergillus**



**E. Coli**



**Coronavirus**



**Algae**

## Characteristics & Benefits

- Neutralizes odors caused by bacteria
- Formulated to aid in the reduction of cross-contamination on treated surfaces in hospitals, schools, institutions and industries
- Economical concentrate to be used with a mop, trigger sprayer or sponge
- 1,000 square feet per gallon coverage when following recommended mixing directions



**AnaspHERE EPA REG. NO.  
10324-131-72786**

